

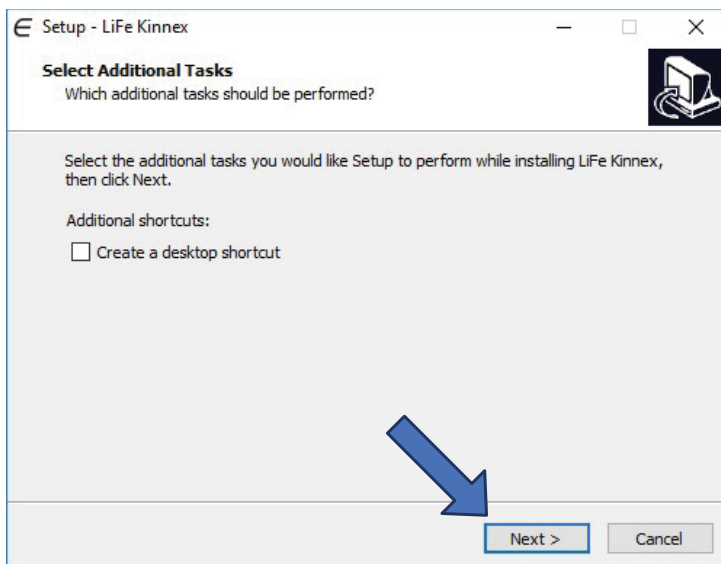
LiFeKinnex WiFi Setup Guide

This Guide will go through the steps to set up your product's WiFi.
To connect to eKinnex, please contact Ergotron directly at
ekinnextsupport@ergotron.com
Phone: 844-243-6244

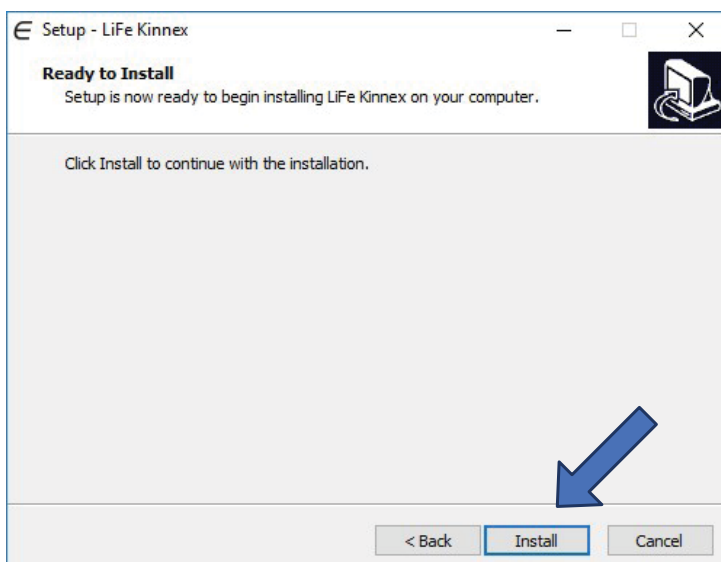
Install LiFeKinnex Application

- 1 To download the set up tool, go to: www.ergotron.com/ekinnext
Click on eKinnex for LiFeKinnex
Click 'Download Setup Tool'

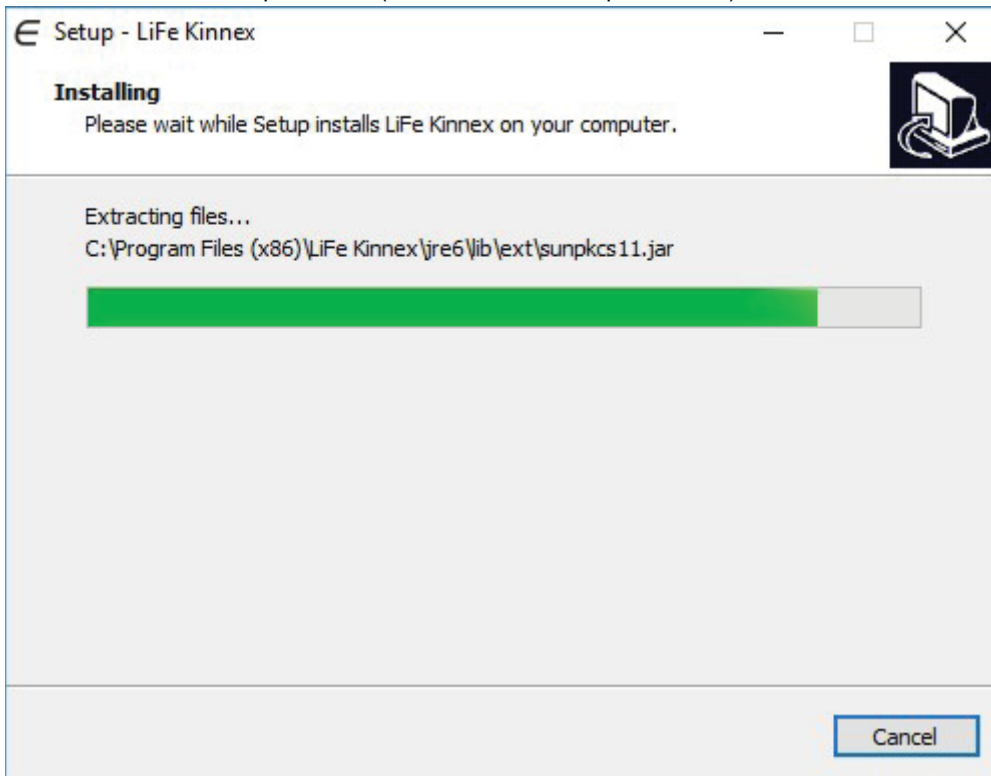
Click Next >



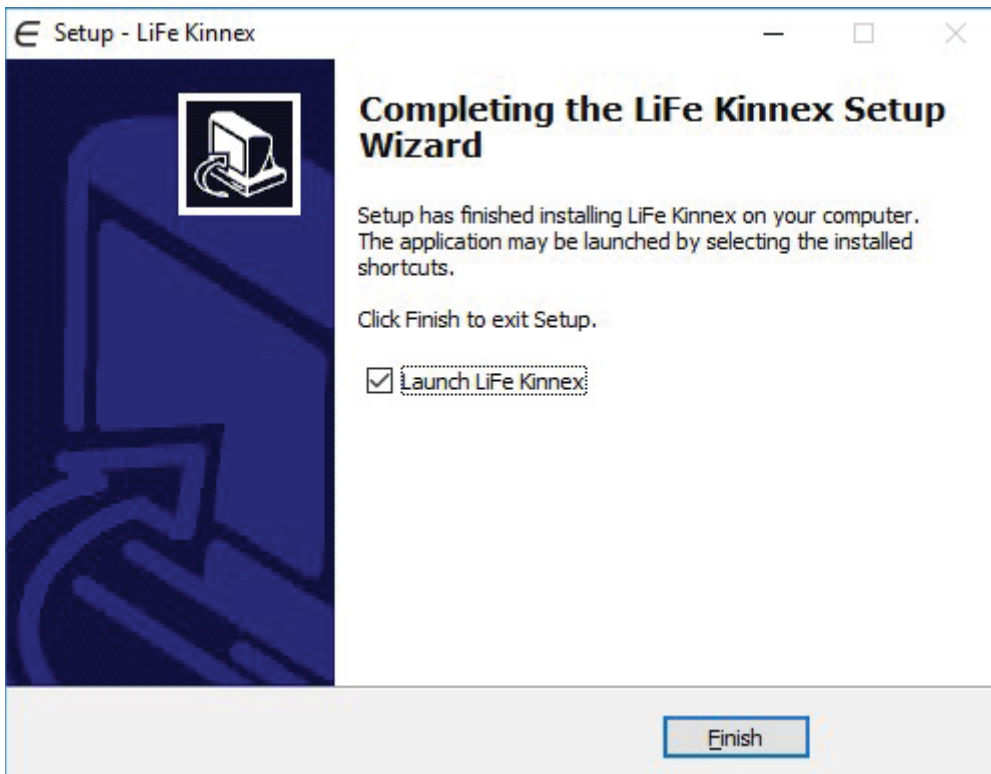
Click Install



Wait while installation is performed (this could take a couple minutes).

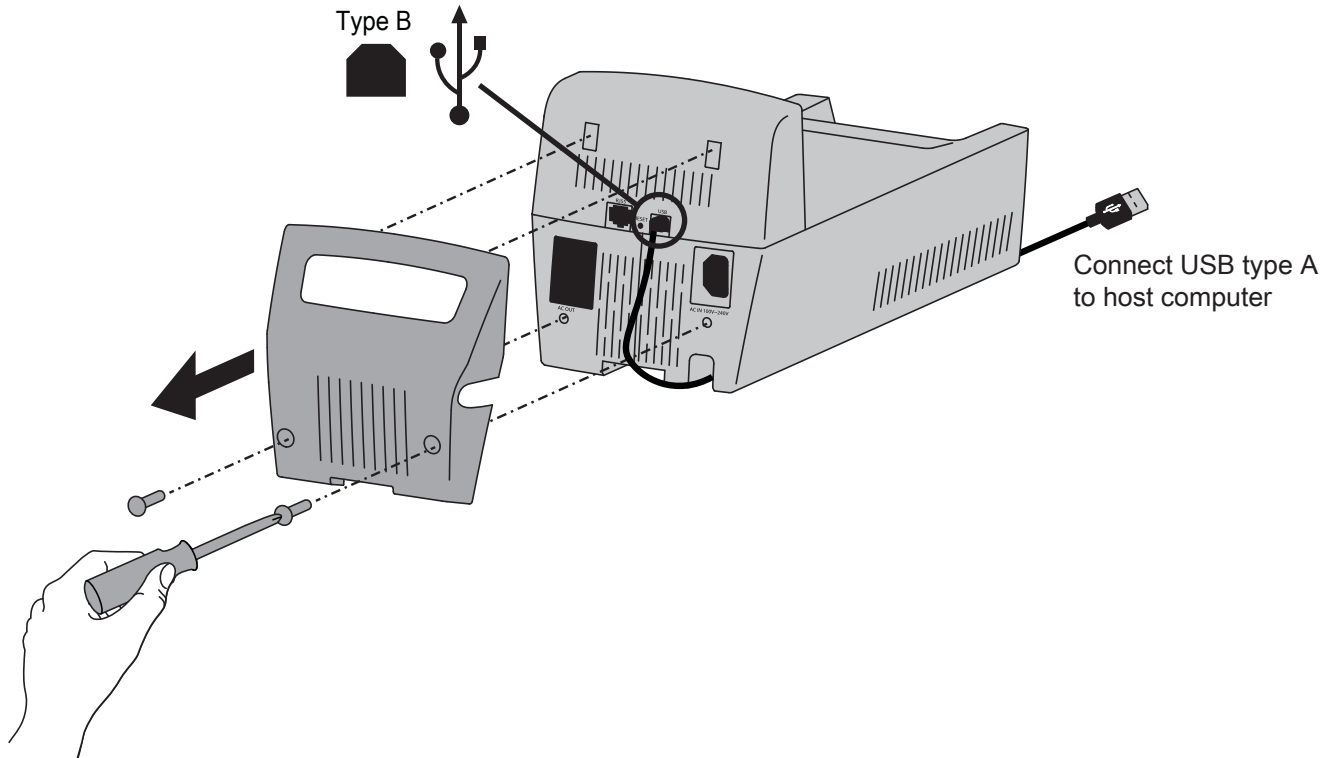


Click Finish

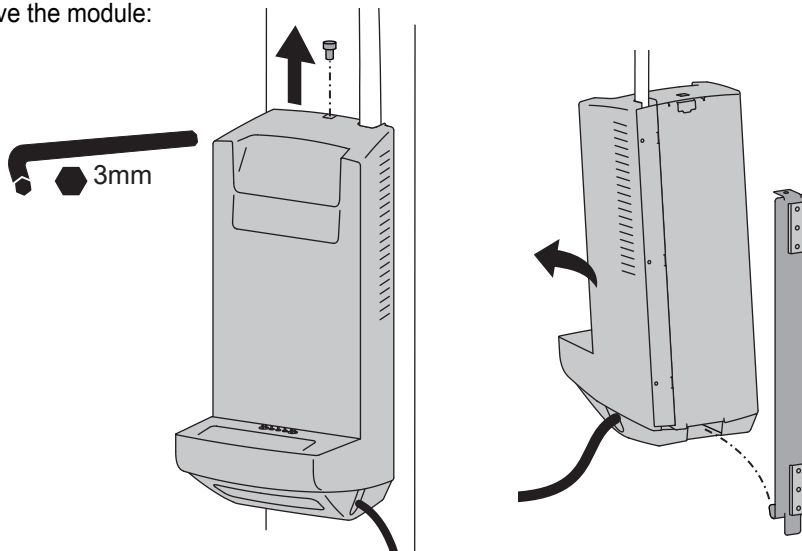


Connect Device to WiFi network

- 2** Connect LiFeKinnex device to the host computer via USB.
Locate the USB port on the bottom of the LiFeKinnex module. Note that it is underneath the cable management cover.



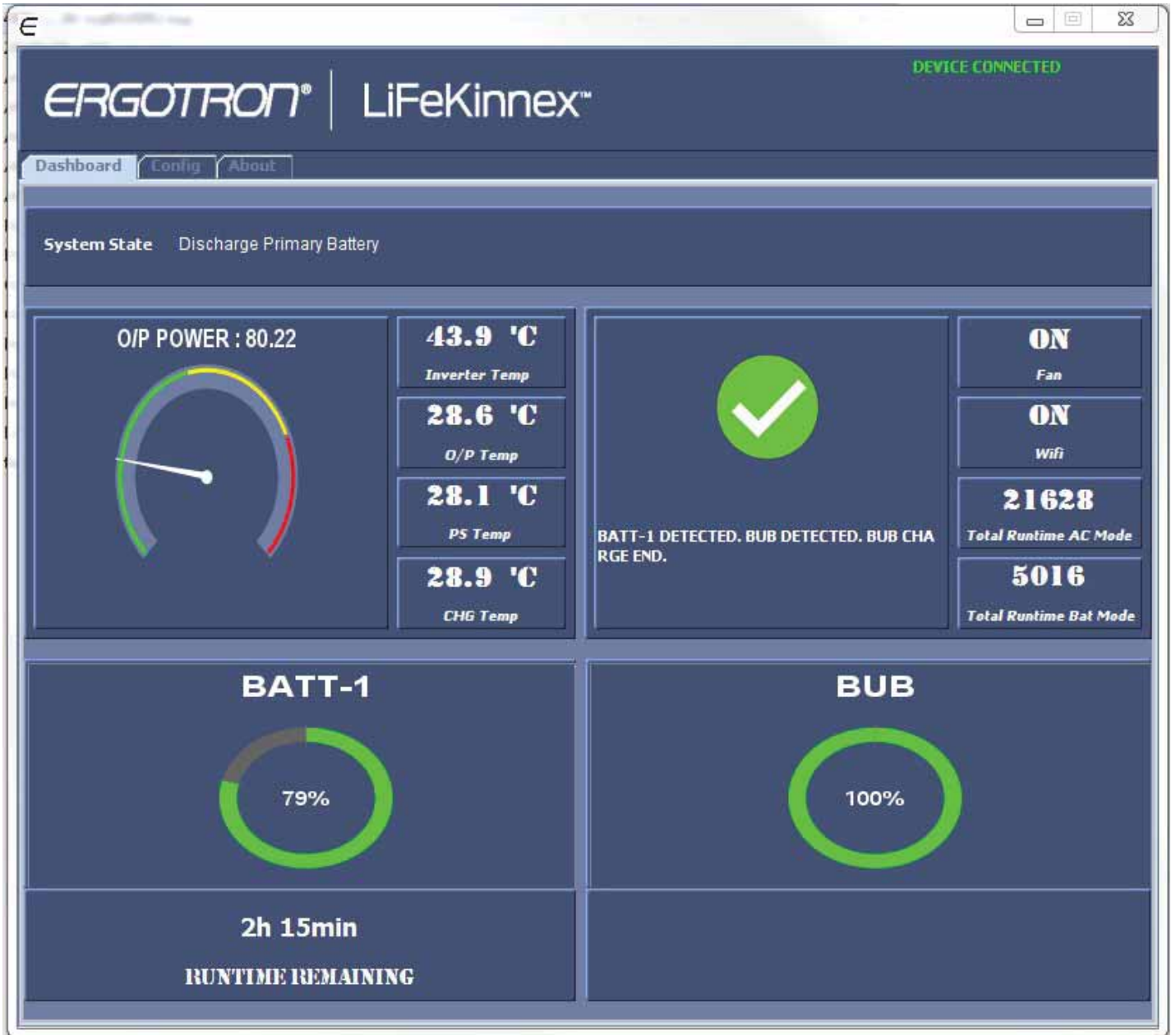
If you need to remove the module:



3

Configure via LiFeKinnex software application.

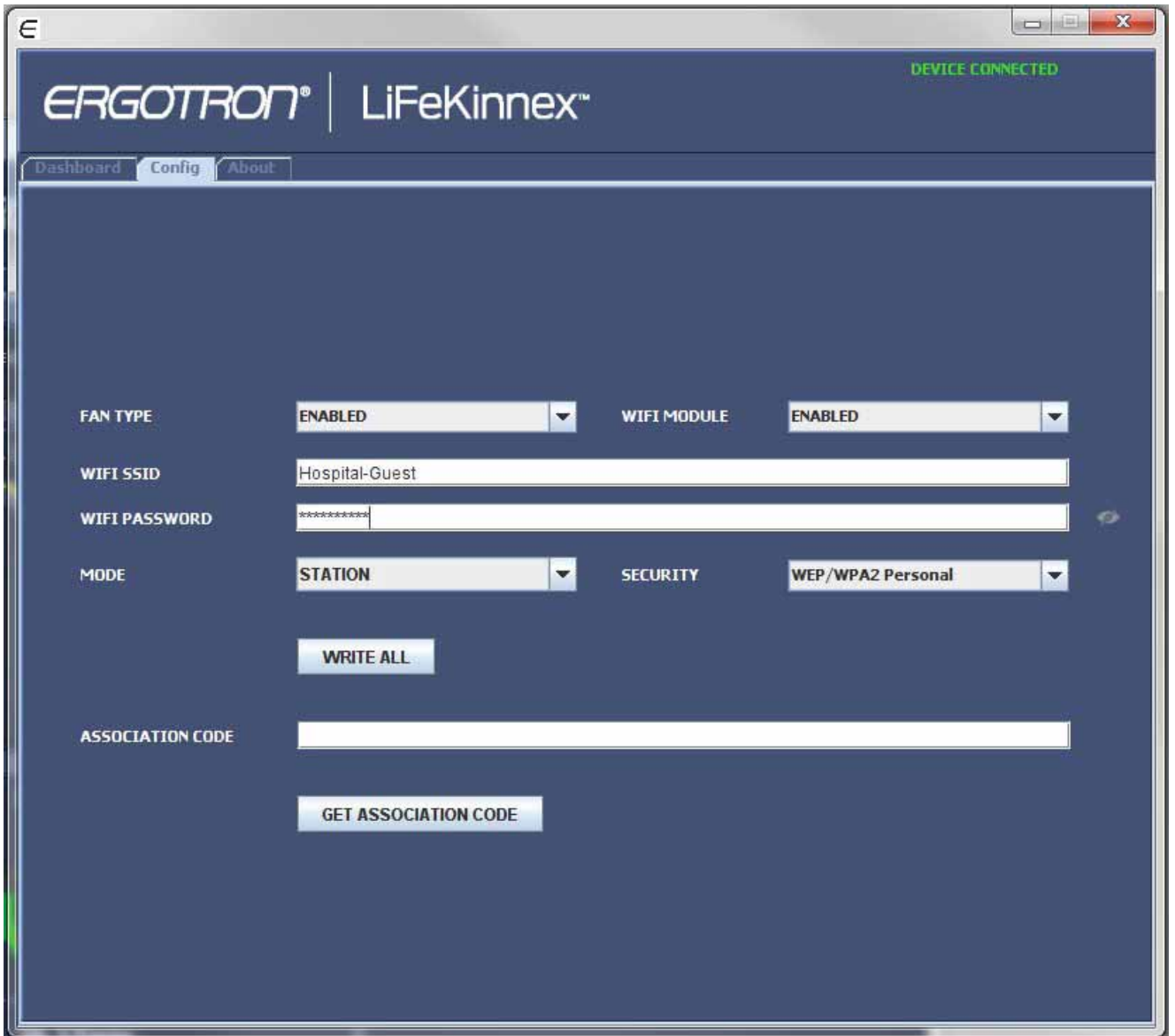
- a. Open LiFeKinnex software application.
- b. Verify that the system is properly connected, the Dashboard screen should appear like below:



- c. Select the Config Tab in the application as shown:



d. The screen shall appear as below:

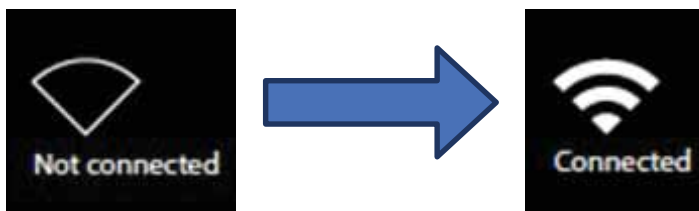


- i. Select "ENABLED" in the WIFI MODULE field
- ii. Enter the WIFI SSID of your network (Note that the WIFI module only operates on the 2.4GHz band)
- iii. Enter the WIFI PASSWORD of your network
- iv. Select "STATION" in the MODE field
- v. When all fields are entered select "WRITE ALL" and verify a Write Successful message appears at the bottom

4

Restart the Power System to Connect.

- a. Press and hold the power button the cart module until the screen goes black.
- b. After the system has fully powered down, press the button briefly to turn the system back on.
- c. Wait approximately 30 seconds and verify that the WiFi symbol changes from Not Connected to Connected as indicated below:



Add connected device to the eKinnex web application

- 5** a. To add device to eKinnex, Select "GET ASSOCIATION CODE" and verify an alpha-numeric code is received like the one shown below:



- b. Copy and paste this code within the eKinnex web application as prompted when adding this device to your hospital group.

ergotron®

For Warranty visit: www.ergotron.com/warranty

For Service visit: www.ergotron.com

For local customer care phone numbers visit: <http://contact.ergotron.com>

www.ergotron.com | USA: 1-800-888-8458 | Europe: +31 (0)33-45 45 600 | China: 400-120-3051 | Japan: japansupport@ergotron.com

© 2018 Ergotron, Inc. All rights reserved. Manufactured for Ergotron by Green Cubes Technology www.greencubestech.com.

LiFeKinnex™ is a registered trademark of Ergotron, Inc.

While Ergotron, Inc. makes every effort to provide accurate and complete information on the installation and use of its products, it will not be held liable for any editorial errors or omissions (including those made in the process of translation from English to another language), or for incidental, special or consequential damages of any nature resulting from furnishing this instruction and performance of equipment in connection with this instruction. Ergotron, Inc. reserves the right to make changes in the product design and/or product documentation without notification to its users. For the most current product information, or to know if this document is available in languages other than those herein, please contact Ergotron. No part of this publication may be reproduced, stored in a retrieval system, or transmitted in any form or by any means, electronic, mechanical, photocopying, recording or otherwise without the prior written consent of Ergotron, Inc., 1181 Trapp Road, Eagan, Minnesota, 55121, USA Patents Pending and Patented U.S. & Foreign. Ergotron is a registered trademark of Ergotron, Inc.