

ergotron®



Since our founding more than three decades ago, we've used movement to remove constraints from how people create, collaborate and work with technology. We rely on ergonomic principles, user-centered designs and more than 200 patents to build kinetic work environments that help people thrive.

Sit-Stand Workstations

**The broadest portfolio
for the perfect fit**

Our products foster a workplace culture of movement, encouraging active workstyles that benefit employers and employees with improved comfort, flexibility and collaboration.

Every body and every workspace is different. With the widest selection of styles, sizes and attachments, Ergotron's WorkFit® sit-stand solutions help employees find their best fit. With the ability to easily go from sitting to standing and back again, they can choose how they work in an environment that inspires creativity and long-term results.



Monitor Mounts

**Well-being is within
an arm's reach**

An active sit-stand workstyle represents just one aspect of a workday that moves. With Ergotron's monitor arms, you can harness even more productivity, collaboration and comfort.

Monitor arms help keep your monitor at the right height whether sitting or standing for an ergonomic fit. Using a monitor arm on its own or with a standing desk supports overall wellness while offering flexible, personalized screen views. By freely moving one, two or three monitors, you can work smarter and free up valuable workspace.



WorkFit-T has a unique design that provides the simplest way to convert a tabletop into a healthy sit-stand workstation, with no mounting required. The WorkFit-T provides 38 cm of vertical adjustment and moves straight up and down, saving space and always staying within the footprint of your desktop. Available in black and white.

WorkFit-TL is a larger version of the WorkFit-T. It features a wider keyboard tray, bigger workspace and supports a weight capacity of up to 18,1 kg. Available in black.

WorkFit-SR, featuring a refined design, attaches to the rear of most surfaces to transform your current workspace into a sit-stand desk. The aluminum worksurface provides an extremely sturdy platform while Ergotron's Constant Force™ technology allows easy handle-free height adjustment.

The ergonomic design offers 45,7 cm of in-tandem height adjustment with an extra 13 cm of independent lift for monitors. Internal cable management hides cord clutter and a pre-installed USB cable provides easy connectivity. Available in black and white.



ACCESSORIES



Single Monitor Kit



Dual Monitor Kit



LCD & Laptop Kit



Grommet Mount



Dual Monitor Kit



LCD & Laptop Kit

ACCESSORIES





Shape individual work experiences with the innovative **TRACE™** Monitor Mount. It adapts to the ergonomic needs of each employee to create agile workspaces for high-performing teams. TRACE

effortlessly shifts between individual tasks and collaborative work using patented Constant Force™ Technology before returning to the natural home position to positively influence employee

productivity and efficiency. The integrated cable management and compact base promote an organized workspace with a flexible design that accommodates changing technology. Minimal assembly

enables an easy installation experience with sustainable packaging you can stand behind. Available in single or dual configurations, white or matte black.



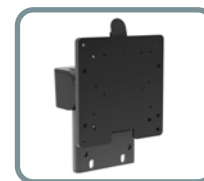
ACCESSORIES



Panel Clamp Kit



Grommet Kit



Single Conversion Kit



Dual Conversion Kit

ACCESSORIES





JUV Wall was designed to meet the needs of a diverse workforce and support office spaces that inspire movement. The non-electric, adjustable surface supports a personalized fit and provides the full ergonomic range of worksurface positioning for comfortable sitting or standing. Reclaim valuable space by flipping down the worksurface

when not in use. Users have access to power and charging at their fingertips without sacrificing aesthetics with the controlled and concealed cable management system. With no floor supports, it provides ample legroom and additional space for storage or accessories.

Available in single or dual monitor versions, the **MXV Desk Mount Monitor Arm** offers exceptional ergonomic comfort and helps enhance productivity. Extremely slim and sleek, the MXV Arm blends naturally with a modern office environment and supports displays weighing up to 9,1 kg. With removable rotational stop,

it offers a high level of functionality and adjustability, while occupying only the desired working space. MXV arms help keep your workspace tidy, thanks to the streamlined cable management system. The patented Constant Force™ technology allows effortless height adjustment according to your needs. Available in white and black matte.



ACCESSORIES



Single Monitor Kit



Dual Monitor Kit



Worksurface warranty valid for one year





The **LX Single**, made of durable steel and aluminum construction, is the perfect solution for monitors weighing up to 11,3 kg. Sleek and streamlined, the LX frees up space and allows you to position your display for greater productivity. Patented Constant Force™ motion technology provides easy display adjustment. The cable management feature routes cables under the arm, for a neat worksurface. Available in white and matte black.



pCon



With all the benefits of an LX Arm, the **Tall Pole** version allows greater range of vertical monitor positioning. It also enhances productivity, allowing you to use up to four screens at the same time.



LX Dual Direct with the LX low-profile crossbow allows monitors to move simultaneously with ease to reclaim valuable desktop space. Screens pivot up and down independently, providing a full motion range, optimal monitor alignment and high levels of collaboration and productivity. With

a total weight capacity of 9,9 kg, LX Dual Direct works with a wide range of monitors. Movement of two screens becomes even easier with the addition of the Dual Direct Handle Kit accessory. Available in aluminum, white and black matte.



Dual Direct Handle Kit

ACCESSORIES

pCon





HX Desk and Wall Arms use an innovative post design to free up space with display positioning that supports greater productivity and collaboration. Sleek and streamlined, HX Arms fit large screens weighing up to 19 kg. Desk Arms available in white or matte black, Wall Arms available in white.

The **HX Desk Monitor Arm with HD Pivot** includes a heavy-duty tilt pivot for an immersive viewing experience on ultra-wide, curved displays 15.2–30.4 cm deep and weighing 12.7–19.1 kg. Available in white or matte black.

ACCESSORIES



Triple Bow Kit



Heavy-Duty Tilt Pivot



Arm Mounting Solutions

Ergotron offers a variety of mounting options for LX, HX and MXV arms.



2-Piece Desk Clamp: Attaches to the back or the side of the desk and requires no tools for installation. Compatible with a wide variety of desk sizes and shapes. It requires underdesk space.



Grommet Mount: Allows arm mounting through the desk surface for a harmonized working surface.



Under Mount C-Clamp: Designed for desks with limited space underneath the worksurface; for example, due to cable channels or sliding surfaces.



Low-Profile Top Mount C-Clamp: Works with many freestanding desks, sliding desks and ones with shallow worksurfaces. Attaches above the desk surface, requiring minimum space under the desk.



Neo-Flex® Stands can be simply placed on your desk with no mounting required. Height adjustment, tilt, pan

and portrait-to-landscape are some of the possibilities for the best viewing and increased productivity.



Neo-Flex Widescreen Lift Stand



Neo-Flex LCD Stand



Neo-Flex Dual LCD Lift Stand

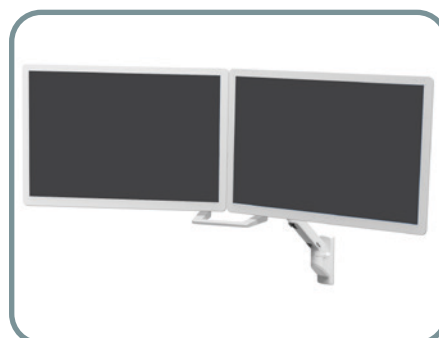


Neo-Flex Notebook Lift Stand

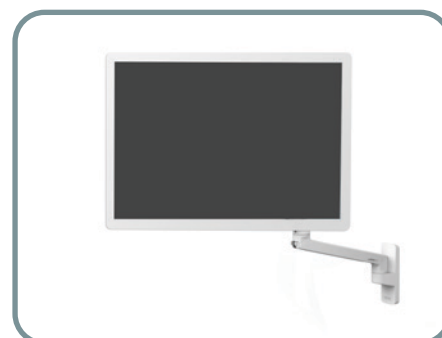
Wall mount solutions are perfect for reception areas, meeting rooms or other tailored needs in the modern corporate office.



HX Single



HX Dual



MXV

Zip12 Wall Charging Mount offers a slim storage enclosure, perfect for charging and securing up to 12 tablets. The charging mount is designed to be compatible with tablets from leading manufacturers like Microsoft, Samsung, Apple, Lenovo, HP, Dell, Amazon, Asus,

Acer and more. The space-saving profile extends less than 15,2 cm from the wall to help you easily incorporate the charging mount into your workspace while providing easy access with Show & Stow™ technology.



Neo-Flex Mobile MediaCenter improves collaboration and facilitates distant co-working with its video conferencing feature. It can be rolled to the preferred working area to support your needs.



The **LearnFit® Sit-Stand Desk** enhances mobility and ergonomics at work, leading to more productivity and well-being. Easy to move from room to room, it adjusts smoothly to your preferred working position with the squeeze of a hand lever.

INNOVATION IS DRIVEN BY OUR CUSTOMERS' NEEDS.

ERGOTRON IS AN ACTIVE MEMBER OF:



dNb Deutsches
Netzwerk Büro

VERENIGING VAN
INRICHTINGS
PROFESSIONALS **UP**

WE LOOK FORWARD TO YOUR VISIT!



ErgotronEurope



@ErgotronInc



Ergotron



LinkedIn.com/Ergotron

Download additional literature at ergotron.com

For more information:

EMEA +31.33.45.45.600 / info.eu@ergotron.com

© Ergotron, Inc. 870-01-068-EO 27.07.2022

Content subject to change.

Patent information available at www.ergotron.com/patents.

Ergotron devices are not intended to cure, treat, mitigate or prevent any disease.

LearnFit, Neo-Flex, TRACE and WorkFit are registered trademarks of Ergotron in the U.S.A. and China.

