

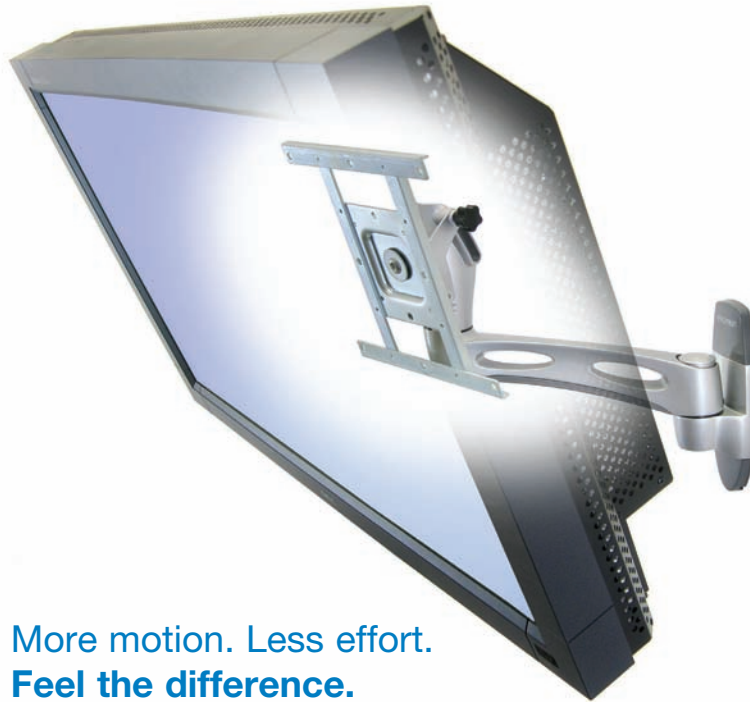
Highlights

- Constant Force (CF™) patented motion technology produces smooth tilt adjustment—set display in position with just a light touch
- Position your LCD or TV for maximum comfort
- Fits 19" to 32" VESA-complaint LCDs weighing up to 22.6 kg
- Up to 20° of smooth continuous tilt adjustment (15° forward/5° back)
- Up to 180° of pan motion with the Swing Arm, 40° on the Pivot
- Allows display to be rotated for portrait or landscape viewing
- Compatible with multiple VESA hole-mounting patterns: 75 x 75, 100 x 100, 100 x 200, 200 x 200 mm



Ergotron® Neo-Flex™ HD

Wall Mount Pivot and Swing Arm



More motion. Less effort. Feel the difference.

The Neo-Flex™ Wall Mount Pivot or Swing Arm are wall mounted solutions specifically designed for medium size LCD monitors and TV's. They offer maximum flexibility to your flat panel: effortlessly tilt, pan and turn the screen to fit your best viewing angle. Your screen will even magically stay in every position without using any knobs or levers.

This reliable solution secures your flat panel investment, while the sleek design of the mount elegantly complements your home or office style. The Neo-Flex™ Wall Mount Pivot and Swing Arm offer reliability, quality and design at a genuinely competitive price.

Installing the Neo-Flex™ Wall Mount Pivot or Swing Arm is very simple: you can comfortably watch TV from anywhere in your living room in less than 10 minutes.

- Position the TV at the most comfortable viewing angle
- Effortless adjustment, no knobs or levers necessary
- Reliable solution for your flat panel investment
- Sleek design complements your home or office style
- Easy to install: do it yourself in less than 10 minutes!
- Best value for money: reliability, quality and design at a genuinely competitive price.



Patented CF™ pivot motion technology produces smooth tilt adjustment

Screen's viewing angle is easily adjusted for each user

Cables are guided along underside of arm

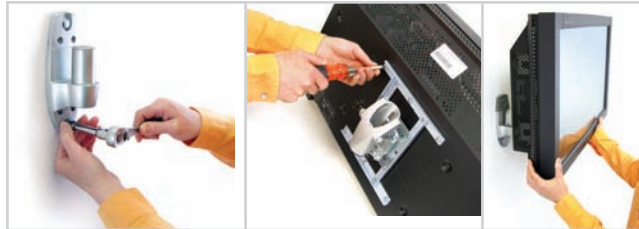


Tilt lock-down feature also provides tilt tension for odd-sized displays that have an extremely forward center of gravity

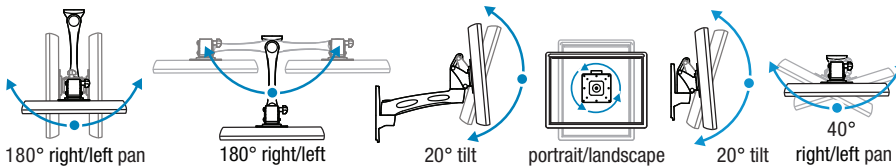
Arm folds flat against wall (see left)

Simple 3-Step Install Process

1. Attach wall base to wall
2. Attach mounting brackets to display
3. Hang display on wall base



Range of Motion



Basic Specifications

Descriptions:	Neo-Flex HD™ Wall Mount Pivot Part Number: 45-195-194 (silver)	Attachment Options: Wall base attaches to vertical wall surfaces. Includes fasteners for wood studs or concrete wall mounting. For mounting to metal studs or other surfaces, customer must supply fasteners.
	Neo-Flex HD™ Wall Mount Swing Arm Part Number: 45-194-194 (silver)	Display Interface Options: Compatible with the following VESA hole-mounting patterns: 75 x 75, 100 x 100, 100 x 200, 200 x 200 mm (covers most VESA-compliant 19" to 32" LCDs)
Weight Capacity:	22.6 kg (50 lbs)	
Shipping Weight:	2.6 kg (5.5 lbs) for 45-194-194 2.1 kg (4.6 lbs) for 45-195-194	
Warranty:	3 years	

© 2006 Ergotron, Inc.
rev. 12/07/2006 870-05-066

Content is subject to change without notification.

Ergotron Europe
Beeldschermweg 3
3821 AH Amersfoort
The Netherlands
Tel: +31 33 45 45 600
Fax: +31 33 45 45 649
info.eu@ergotron.com
www.ergotron-europe.com

