



Ergotron® 200 Series

combination flat panel/keyboard arm

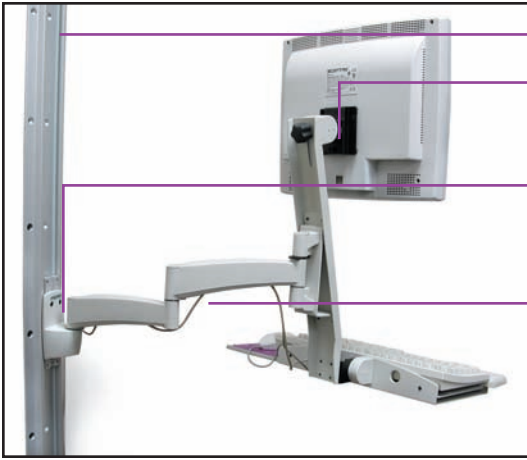
Highlights

- Extends keyboard out over 30"; entire system folds back to within 9" of wall for storage.
- Compact monitor and keyboard Arm design frees up space; keyboard folds up for storage
- Easily position your monitor and keyboard for maximum comfort and productivity
- Patented pivot system provides premium long-life monitor adjustment while maintaining touch-screen stability
- Handles most flat panel monitors up to 25 lbs (11.3 kg)
- Interfaces available for virtually any surface
- Rugged construction ensures long-lasting durability
- Integrated cable management system organizes and routes cables neatly
- VESA® Flat Display Mounting Interface (FDMI™) Standard compliant for easy monitor attachment
- Interchangeable components let you customize your solution
- 5-year warranty



Attach your flat panel monitor and keyboard to the 200 Combo Arm and free up space while adding greater range of movement. The entire system folds back out of the way when not in use, ideal for areas where space is critical. The 200 Combo attaches to virtually any vertical or horizontal surface.





Wall Track.

Patented pivot allows monitor to tilt up to +90°/-15° and rotate 360° for portrait-landscape viewing.

Select a Vertical Mount Base (shown), Desk Clamp Base, or Grommet Mount Base according to your application.

Cables snap up into cable channels under the arm extensions—and snap out for quick access.

Command Post.

Keyboard Holder has a slide-out mouse tray for left or right-handed use.

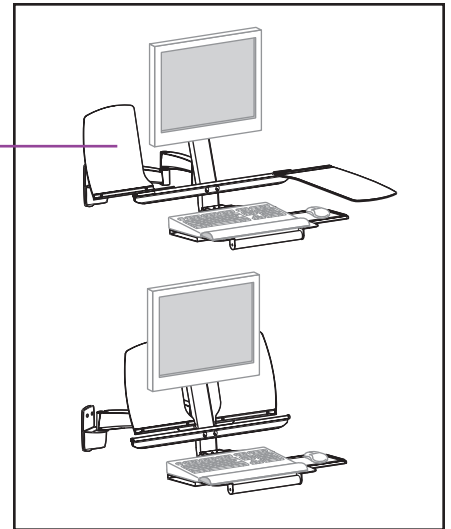


CPU Holder—several sizes are available.

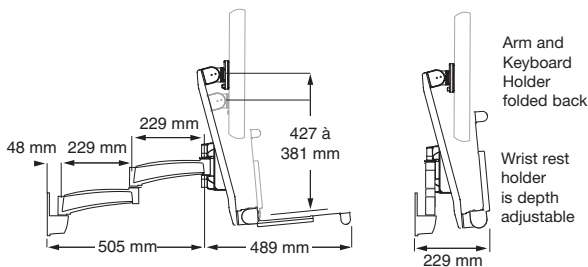
Optional Document Holder/Writing Surface shown attached to Combo Arm. Platforms slide back behind monitor for storage.

Mouse Pouch, sold separately, holds mouse when keyboard is flipped up for storage.

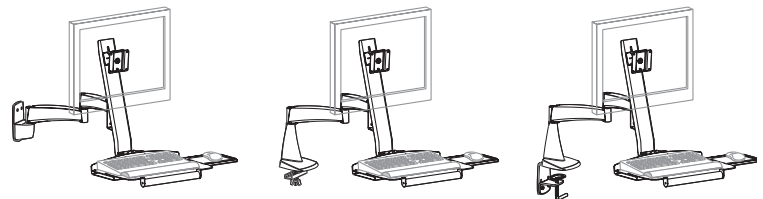
Handle allows user to easily swing monitor and keyboard into position for maximum comfort and productivity. Fold unit back and park against wall when not in use.



General Dimensions:



Base Options:



Select a Vertical Mount Base (left), Grommet Mount Base, or Desk Clamp Base according to your application.

Basic Specifications:

Application Options: Slatwall, Wall Track, Wall Plate, Direct Mount, Command Post, Desk Clamp, Grommet Mount and Pole Mount

Monitor Interface Pad Options:

- VESA MIS-D, 100/75, C
- Custom Interface Plate (contact Ergotron for details and availability)

Colors: Available in black or grey

Weight Capacity:

- Monitor: 25 lbs (11.3 kg)
- Keyboard: 15 lbs (6.8 kg)

Shipping Weight: 25 to 29 lbs (11.4 to 13.2 kg)

Net Weight: 23 to 27 lbs (10.4 to 12.3 kg)

Accessory Options: Extensions, Document Holder/Writing Surface, Rotation Control Kit, Quick Release Interface, Wrist Rests, Mouse Pad, Mouse Pouch, CPU Holders, Surge Suppressors and Power Strips

© 2006 Ergotron, Inc.
rev. 27/07/2006 870-05-044

Ergotron Europe
Beeldschermweg 3
3821 AH Amersfoort
The Netherlands
Tel: +31 33 45 45 600
Fax: +31 33 45 45 649
info.eu@ergotron.com
www.ergotron-europe.com

